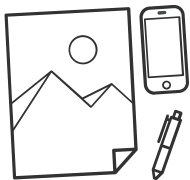




More Flexibility, More Opportunity

Take object customisation to new heights with the VersaOBJECT CO-i Series of UV flatbed printers. Digital UV printing has never been more versatile and the CO-i Series is the perfect solution for customising boards or objects up to 242 mm in height and can even handle irregular surfaces.

Visit www.rolanddg.com.au/co-i for further information



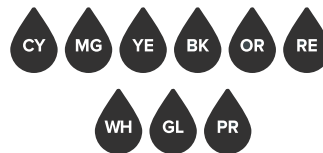
IMPRESSIVE PRINT CAPABILITY

Print onto a virtually limitless range of flexible and rigid substrates and objects.



TIME-SAVING TURNAROUND

Deliver a fast turnaround on jobs, with prints instantly ready for finishing and installation.



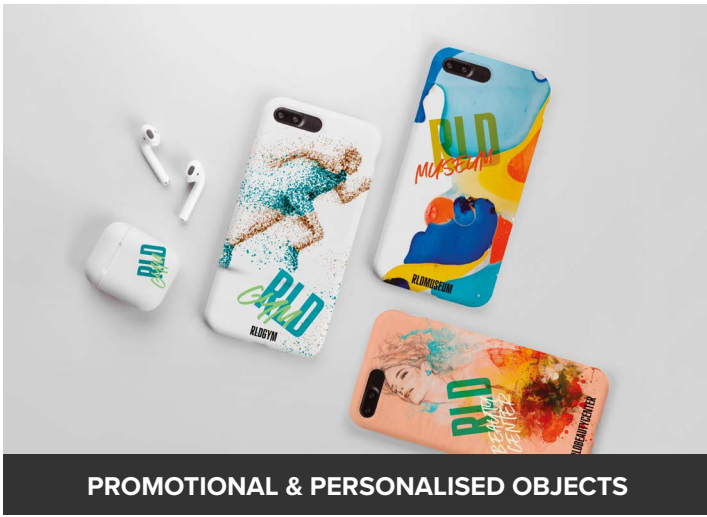
FINE PRINT QUALITY

Delight your customers with stunning quality colour-accurate prints, with ECO-UV EUV5 ink.

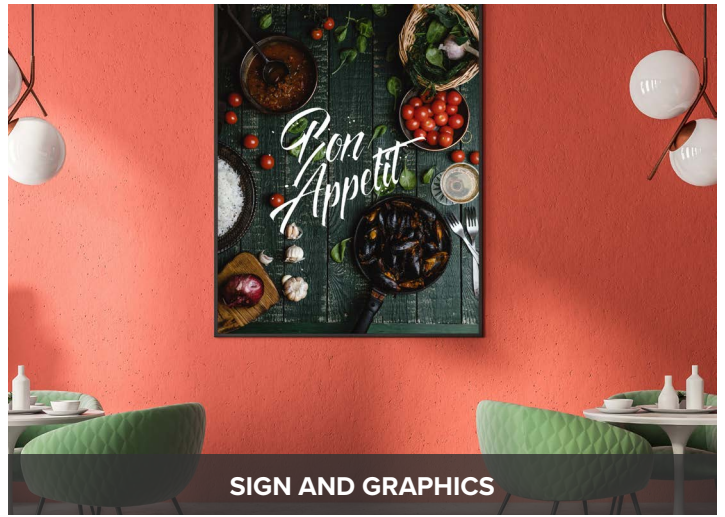


DISTANCE MODE

Print directly onto irregular or curved objects with a high degree of accuracy.



PROMOTIONAL & PERSONALISED OBJECTS



SIGN AND GRAPHICS



ITEMS WITH CURVED SURFACES



INDUSTRIAL

Specifications

Model		CO-300i-F2	CO-300i-F2A	CO-640i-F2	CO-640i-F3	CO-640i-F4
Printing method		Piezo ink-jet method				
Acceptable media	Width	Max. 762 mm (30 in.)	Max. 762 mm (30 in.)	Max. 1,625 mm (64 in.)	Max. 1,625 mm (64 in.)	Max. 1,625 mm (64 in.)
	Thickness/height	242 mm (9.5 in.)				
	Weight bed	Max. 100 kg / m ² (0.142 lb./in ²)				
Maximum Printing Width/Length		749 (W) × 1,500 (L) mm (29.4 × 59.0 in.)	749 (W) × 1,500 (L) mm (29.4 × 59.0 in.)	1,612 (W) × 1,500 (L) mm (63.4 × 59.0 in.)	1,612 (W) × 2,500 (L) mm (63.4 × 98.4 in.)	1,612 (W) × 3,050 (L) mm (63.4 × 120.0 in.)
Ink cartridges	Type	ECO-UV EUV5				
	Colours	Cyan, Magenta, Yellow, Black, Red, Orange, White, Gloss, Primer				
Ink configurations		CMYKReOrWhGl, CMYKReOrWh, CMYKReOrWhPr, CMYKReWhGlPr, CMYKWhGlPr, CMYKWhGlWhGl, CMYKCMYK				
Printing resolution (dpi)		Maximum 1,440 dpi				
Dimensions		1,928 (W) × 2,384 (D) × 1,469 (H) mm (76.0 in. × 93.9 in. × 57.9 in.)	1,928 (W) × 2,384 (D) × 1,469 (H) mm (76.0 in. × 93.9 in. × 57.9 in.)	2,815 (W) × 2,384 (D) × 1,469 (H) mm (110.9 in. × 93.9 in. × 57.9 in.)	2,815 (W) × 3,399 (D) × 1,469 (H) mm (110.9 in. × 133.9 in. × 57.9 in.)	2,815 (W) × 3,999 (D) × 1,469 (H) mm (110.9 in. × 157.5 in. × 57.9 in.)
Included accessories		Software (VersaWorks, Roland DG Connect), power cord, cleaning liquid, drain bottle, User's Manual.				

Specifications, designs and dimensions listed may be subject to change without notice.



Enjoy the peace of mind of having one of the most comprehensive warranty packages in the industry, included with the CO-i Series.

Roland DG reserves the right to make changes in specifications, materials or accessories without notice. Actual output may vary. For optimum output quality, periodic maintenance to critical components may be required. Please contact your Roland DG dealer for details. No guarantee or warranty is implied other than expressly stated. Roland DG shall not be liable for any incidental or consequential damages, whether foreseeable or not, caused by defects in such products. PANTONE® is the property of Pantone LLC. All other trademarks are the property of their respective owners. Reproduction or use of copyrighted material is governed by local, national, and international laws. Customers are responsible for observing all applicable laws and are liable for any infringement. Roland DG Corporation has licensed the MMP technology from the TPL Group.

AUTHORISED DEALER:



www.rolanddg.com.au

SELECTED IMAGES BY:

