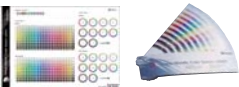


RIP & PRINT MANAGEMENT SOFTWARE

Roland VersaWorks®

Roland Professional Print Management Software Included



Roland VersaWorks® supports Adobe® Illustrator®, CorelDRAW® and other popular design software packages. Choose from a wide variety of layout functions includes scaling, cropping, rotating, auto layout and tiling to optimize your print media. VersaWorks also features Roland Color System Libraries for accurate color matching of traditional and metallic colors, and variable data printing which allows you to efficiently create a series of signs, labels and name badges in which the text and graphics change from one print to the next.

Roland VersaWorks System Requirements	
Operating system	Windows® 7 Professional/Ultimate (32-bit); Windows Vista® Business/Ultimate (32-bit); Windows® XP Professional Service Pack 2 or later (32-bit)
CPU	Core™2 Duo, 2.0 GHz or faster recommended
RAM	2 GB or more recommended
Video card and monitor	A resolution of 1,280 x 1,024 or more recommended
Free hard-disk space	40 GB or more recommended
Hard-disk file system	NTFS format
Optical drive	DVD-ROM drive
Application software compatible with Cutting and Print&Cut	
Adobe® Illustrator® 10, CS, CS2, CS3, CS4, CS5 / CorelDRAW® 11, 12, X3, X4, X5	

R-Works

Easy-To-Use Roland Design Software Included

R-Works allows you to immediately start designing graphics for the BN-20, even if you do not have any design software of your own. With R-Works, you can quickly import commercially-available stock photos or personal photos taken with a digital camera. Create original layouts with text and graphics for custom T-shirts, labels and decals.

**R-Works System Requirements** Windows® 7 Professional/Ultimate (32-bit); Windows Vista® Business/Ultimate (32-bit); Windows® XP Professional Service Pack 2 or later (32-bit)



Specifications		
Printing technology		Piezoelectric inkjet
Media	Width	150 to 515 mm (5.9 to 20.3 in.)
	Thickness	Maximum 1.0 mm (39 mil) with liner, for printing Maximum 0.4 mm (16 mil) with liner and 0.22 mm (9 mil) without liner, for cutting
	Roll outer diameter	Maximum 150 mm (5.9 in.)
	Roll weight	Maximum 6 kg (13.2 lbs.)
	Core diameter	76.2 mm (3 in.) or 50.8 mm (2 in.)
Printing/cutting width*1		Maximum 480 mm (18.9 in.)
Ink cartridges	Type and capacity	Roland ECO-SOL MAX (220 cc cartridge) or Roland aqueous pigment (FPG) ink (220 cc cartridge)
	Colors	Five colors (cyan, magenta, yellow, black, and metallic silver) or Four colors (cyan, magenta, yellow, and black) (Five colors are only ECO-SOL MAX)
Printing resolution (dpi)		Maximum 1,440 dpi
Cutting blade	Type	Roland CAMM-1 series compatible
	Blade offset	0.25 mm (9 mil)
Cutting speed		10 to 150 mm/s
Blade force		30 to 300 gf
Software resolution (when cutting)		0.025 mm/step
Distance accuracy (when printing) *2 *3		Error of less than ±0.3% of distance traveled, or ±0.3 mm, whichever is greater
Distance accuracy (when cutting) *2 *4		Error of less than ±0.4% of distance traveled, or ±0.3 mm, whichever is greater
Repetition accuracy (when cutting) *2 *5		±0.1 mm or less
Alignment accuracy for printing and cutting *2 *6		±0.5 mm or less
Alignment accuracy for printing and cutting when reloading media *2 *7		Error of less than ±0.5% of distance traveled, or ±3 mm, whichever is greater
Print heater *8		Temperature: 35°C (95°F)
Connectivity		USB (compliant with Universal Serial Bus Specification Revision 2.0)
Power-saving function / Power requirements		Automatic sleep feature / AC 100 to 240 V ±10 %, 1.5 A, 50 / 60 Hz
Power consumption	During operation	Approx. 90 W
	Sleep mode	Approx. 5.5 W
Acoustic noise level	During operation	62 dB (A) or less
	During standby	42 dB (A) or less
Dimensions / Weight		995 (W) x 585 (D) x 291 (H) mm (39.2 (W) x 23 (D) x 11.5 (H) in.) / 35 kg (79.4 lbs.)
Environmental	Power on	Temperature: 20 to 32°C (68 to 90°F), humidity: 35 to 80%RH (no condensation)
	Power off	Temperature: 5 to 40°C (41 to 104°F), humidity: 20 to 80%RH (no condensation)
Included items		Power cord, USB cable, blade, blade holder, Roland Software Package, Software RIP (Roland VersaWorks), User's Manual, etc.

\*1 The length of printing or cutting is subject to the limitations of the program. \*2 Using Roland specified media, loaded correctly, temperature: 25°C (77°F), humidity: 50 %RH, all pinch rollers are used, 25 mm or more for both right and left margins and 35 mm or more front margin, excluding expansion or contraction of the media, and all correction and adjustment functions of this machine have been made properly. \*3 Using Roland specified media, print travel of 1m. \*4 Using Roland specified media, cut travel of 1m. \*5 Range for assured repetition accuracy: Length 1,000 mm \*6 Provided that media length is under 1,000 mm. Excluding possible shift caused by expansion/contraction of the media and/or by reloading the media. \*7 Using Roland specified media, data size: 1,000 mm in the media-feed direction, 480 mm in the carriage-movement direction. No lamination. Automatic detection of crop marks at 4 points when media is reloaded. Excludes the effects of skewed movement and of expansion and contraction of the media. \*8 Warm-up is required after power up. This may require 5 to 20 minutes, depending on the operating environment. The preset temperature may fail to be reached 35°C (95°F) depending on the ambient temperature and media width.

**About Metallic Silver Ink** Due to the nature of the metallic silver ink, the pigment in this ink will settle in the cartridge and ink flow system, requiring you to shake the cartridge before each use. Outdoor durability is three years for CMYK inks, one to three years for metallic silver ink, depending on the media used. Roland strongly recommends lamination for both indoor and outdoor graphics to ensure the quality of metallic silver ink.

Options	Model	Description
ECO-SOL MAX Media	SCM-GVWG-25-508	Coated vinyl white gloss, 508 mm x 25 m (20' x 82')
	MV-G-18G	Gray adhesive vinyl, 460 mm x 20 m (18.11' x 65')
	SCM-GPPG-25-508	Photo paper gloss, 265 gsm, 508 mm x 25 m (20' x 82')
	SCM-GPPM-25-508	Photo paper matt, 265 gsm, 508 mm x 25 m (20' x 82')
	SCM-TTRH-25-500	Textile heat transfer film, 500 mm x 25 m (19.68' x 82')
	SCM-FTRH-25-500	Textile heat transfer film, 500 mm x 25 m (19.68' x 82')
	THT-440	Textile heat transfer film, 440 mm x 20 m (17.32' x 65')
	SCM-GGPET-20-500	Glossy gold self adhesive PET, 500 mm x 20 m (19.68' x 65')
	SCM-GSPET-20-500	Glossy silver self adhesive PET, 500 mm x 20 m (19.68' x 65')
	SP2-SG-18T	Glossy PET film, adhesive, 450 mm x 20 m (17.71' x 65')
	SP-CL-515T	Clear PET film, adhesive, 515 mm x 20 m (20.27' x 65')
	RMC-BPBB-45-508	Blueback paper, 135 gsm, 508 mm x 45.7 m (20' x 150')
	RMC-BPWB-45-508	Whiteback paper, 135 gsm, 508 mm x 45.7 m (20' x 150')
	RMC-SAMP	Self adhesive paper, 200 gsm, 508 mm x 30 m (20' x 98')
Aqueous Ink Media	PCM-PMP1-30-508	Poster paper, 125 gsm, 508 mm x 30.3 m (20' x 99')
	PCM-PMP2-30-508	Premium matt paper, 150 gsm, 508 mm x 30.48 m (20' x 100')
	PCM-PMP3-30-508	Poster paper, 180 gsm, 508 mm x 30.5 m (20' x 100')
	PCM-WMWV-12-508	Self adhesive vinyl, 508 mm x 12.2 m (20' x 40')
	PCM-SAMP-30-508	Self adhesive paper, 200 gsm, 508 mm x 30 m (20' x 98')
ECO-SOL MAX Ink	ESL3-MG	Magenta, 220 cc
	ESL3-YE	Yellow, 220 cc
	ESL3-CY	Cyan, 220 cc
	ESL3-BK	Black, 220 cc
	ESL3-MT	Metallic silver, 220 cc
	SL-CL	Cleaning liquid, 1 pc.
	FPG-MG	Magenta, 220 cc
Aqueous Pigment Ink	FPG-YE	Yellow, 220 cc
	FPG-CY	Cyan, 220 cc
	FPG-BK	Black, 220 cc
	CJ-CL	Cleaning liquid, 1 pc.
	ZEC-U5022	For thick, reflective and fluorescent vinyl, 2pcs.
Blade		
Blade holder	XD-CH3	Blade holder with blade extension abjuster, made of resin



Optional Stand  
PNS-24

Imagine.



# VersaSTUDIO

## SIGN MAKER BN-20

## Make a Lasting Impression with VersaSTUDIO



Roland reserves the right to make changes in specifications, materials or accessories without notice. Your actual output may vary. For optimum output quality, periodic maintenance to critical components may be required. Please contact your Roland dealer for details. No guarantee or warranty is implied other than expressly stated. Roland shall not be liable for any incidental or consequential damages, whether foreseeable or not, caused by defects in such products. Adobe, PostScript, PostScript 3 and the PostScript logo are trademarks of Adobe Systems Incorporated. All other trademarks are the property of their respective owners. Roland DG Corp. has licensed the MMP technology from the TPL Group.



AUTHORIZED DEALER:

Printed in Japan. RDG-416090199 11 MAY A-4 P-S

www.rolanddg.com





### Heat Transfers for Apparel

Right at your desktop, you can print quality heat transfers and contour cut them into any shape for stylish results. Apply Metallic Silver ink for hundreds of striking metallic color effects.\*1

### POS and POP

With the BN-20, you can produce POP displays in unique shapes and colors that attract attention and drive retail sales. Create a single POP or an entire campaign, profitably, with all the convenience of our easy-handling 220cc ink cartridges.

### Cell Phone and Laptop Wraps

Roland Print&Cut versatility allows you to print and digitally die cut graphics in one seamless workflow for custom labels and decals, including cell phone skins, laptop wraps and more.

Print  
& Cut

## Explore a World of New Applications Right at Your Desktop.

Print&Cut Versatility

Outdoor Durable Inks

Metallic Effects

With a Roland VersaSTUDIO BN-20 20-inch inkjet printer/cutter, the possibilities are endless. This powerful, yet compact printer includes everything you need to print and cut high quality durable graphics right at your desktop. Add stunning metallic effects, perfect for premium brands. Display your graphics indoors or out for lasting impact. A complete low-cost solution, the BN-20 is a great investment for your growing business.

### Cut Vinyl Signage

From pinstriping for vehicles and motorcycles to window signs and displays, contour cutting is essential to your production workflow. The BN-20 allows you to cut vinyl signs using a wide variety of fonts\*. \*The BN-20 supports TrueType and OpenType fonts.

### Labels and Decals for Outdoor Display

The BN-20 comes with award-winning Roland ECO-SOL MAX ink for outdoor signs, labels and decals. Graphics are easy to produce and durable up to three years outdoors without lamination.\*2 The BN-20 also supports water-based Roland FPG inks for exceptional indoor graphics.\*3

Outdoor  
Durable Inks  
**3**  
years

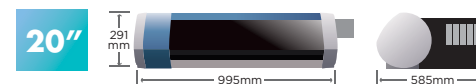
### Posters

Using Metallic Silver ink, you can add luxurious accents and premium value to posters and photographic reproductions.



### A Complete Solution

The BN-20 allows you to print graphics up to size A2 or 480 mm wide (18.9"), including crop marks for easy finishing. Featuring its own print management and design software, the BN-20 is a complete business solution in a box.



**VersaSTUDIO**  
SIGN MAKER BN-20

Roland  
Intelligent  
Pass  
Control

ECO-SOL MAX

Print  
& Cut

\*1 Metallic silver ink should only be used on garments as a spot color as mixing it with other colors will negatively impact washability.  
\*2 Three-year outdoor durability is based on accelerated weather tests conducted by Roland/DG. Results may vary depending on the location and application. Some applications, including vehicle graphics, may require lamination.  
\*3 Ink type must be selected at the time of purchase.