

DWX-51D Highlights:

- 5-axis simultaneous milling
- Produce zirconia, wax, PMMA, composite resin, PEEK and gypsum restorations
- Automatic 10-station Tool Changer for continuous production
- Includes 9 pin-type material adapter
- Precision ball screw-driven system
- New C-shape clamp for easy adjustment and alignment
- Powerful vacuum and anti-static ionizer for clean calibration and dust reduction
- Sturdy frame for stable milling
- Color-coded LED status lights signal machine errors and milling completion
- User-friendly tool storage, replacement and cleaning features
- Industry-best warranty and post-sale support
- Made in Japan



SPECIFICATIONS

Cuttable material	Zirconia, Wax, PMMA, Composite Resin, PEEK, Gypsum	
Loadable workpiece shape	Disk type (with step)	Step section: 98.5 mm (diameter), height 10mm Body section: 95 mm (diameter), height max. 60mm
	Pin type	Pin diameter: 6 mm
Operating speed	6 to 1800 mm/min. (0.24 to 70.9 in./min.)	
Spindle motor	Brushless DC motor	
Spindle speed	6,000 to 30,000 rpm	
Rotary axis travel angle	A: ± 360° B: ± 30°	
Number of burs housed	10	
Attachable bur	Shank diameter: 4 mm, Length: 40 to 55 mm	
Compatible compressed air	0.02 to 0.2 MPa	
Interface	USB	
Control command set	RML-1, NC code	
Power requirements	AC 100 to 240 V ±10%, 50/60 Hz, 2.0 A (overvoltage category II, IEC 60664-1)	
Power consumption	Approx. 200 W	
Operating noise	During operation: 70 dB (A) or less (when not cutting), During standby: 45 dB (A) or less	
External dimensions	Width x depth x height: 495 x 660 x 600 mm (19.5 x 26.0 x 23.6 in.)	
Weight	67 kg (147.7 lbs.)	
Installation environment	Indoor use at altitudes up to 2,000 m (6,562 ft.) Temperature: 5 to 40 °C (41 to 104 °F), humidity: 35 to 80% (no condensation) Ambient pollution degree: 2 (as specified by IEC 60664-1) Short-term temporary overvoltage: 1440 V Long-term temporary overvoltage: 490 V	
Included items	Power cord, USB cable, Regulator, Air hose, Pin-type material adapter, Automatic correction jig, Detection pin, Torque screwdriver, Milling bur holders, Mounting screws, Hexagonal screwdriver, T-shaped hexagonal screwdriver, Dust- collection hoses, Dust collection hose adapter, spanner, Roland Software Package CD, Ferrite core, Manuals	
System requirements for USB connection	Windows® 7/8/8.1/10 (32 or 64 bit) operating system, plus included USB cable	

OPTIONS

Milling bur holder	ZBH-4D	Replacement milling bur holder
Pin-type material adaptor	ZV-51D	Replacement pin-type material adaptor
Milling bur	ZDB-100D	R1.0mm milling bur for composite resin
Milling bur	ZDB-50D	R0.5mm milling bur for composite resin
Milling bur	ZDB-30D	R0.3mm milling bur for composite resin
Milling bur	ZCB-100D	R1.0mm milling bur
Milling bur	ZCB-50D	R0.5mm milling bur
Milling bur	ZCB-40D	R0.4mm milling bur



The Roland Easy Shape logo symbolizes the Company's philosophy in the dental industry. High-level products, first quality materials, and sophisticated, cutting-edge technologies combine to create the finest dental milling devices and precision results for your lab.

Roland DG reserves the right to make changes in specifications, materials or accessories without notice. Actual device output may vary. For optimum output quality, periodic maintenance to critical components may be required. Please contact your Roland DG dealer for details. No guarantee or warranty is implied other than expressly stated. Roland DG shall not be liable for any incidental or consequential damages, whether foreseeable or not, caused by defects in such products.

Three-dimensional shapes may be protected under copyright. All trademarks are the property of their respective owners. Reproduction or use of copyrighted material is governed by local, national, and international laws. Customers are responsible for observing all applicable laws and are liable for any infringement.

Roland DG Corporation has licensed the MMP technology from the TPL Group.

The all-new **DWX-51D** Dental Mill



The DWX-51D dental mill is designed with you in mind, delivering smart and effortless milling with the highest-quality results.





DWX-51D 5-Axis Dental Milling Machine

The DWX-51D is designed for effortless, precision production of dental prosthetics from copings, crowns and bridges to inlays, onlays and abutments, etc. With a host of automated features and a clean, stable work environment, the DWX-51D is the perfect solution for labs wanting to increase production or those looking to get into digital milling for the first time.



Built-for-You and Built-to-Last

It's no accident that the DWX-51D has all the advanced and easy features that a lab technician is looking for in a production mill. After years of extensive research in which users were asked what they needed, the DWX-51D was developed to enhance user experience, maximize ease-of-use and improve output quality, all with the reliability Roland DG machines are known for.

Easy Set-up and Clean Operation

A new C-shape clamp requires the adjustment of only two screws for a simplified set-up. It also provides exact alignment and uniformity, resulting in less misalignment issues. The DWX-51D also has a unique airflow with a powerful vacuum to reduce dust, while an ionizer removes static when milling PMMA.



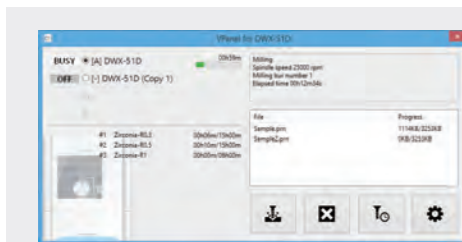
Easy-set up, C-shape clamp



Inner structure, unique airflow

VPanel for Simplified Operation

Complex controls associated with CNC milling have been replaced by a user-friendly Virtual Machine Panel (VPanel) that automatically starts the milling process, conducts machine diagnostics and operates milling calibration from your computer.



Connect up to four Roland DG DWX milling machines to one computer for even greater productivity.

Economical Open Architecture

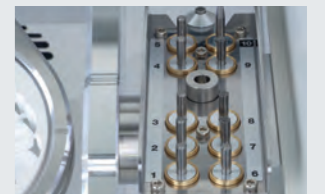
The open architecture of the DWX-51D allows you to work with the latest materials, CAD/CAM software and scanners, without needing to rely on a single source.



Fast, Efficient and User-Friendly 5-Axis Machining

The DWX-51D is designed so virtually any user can become an expert overnight. A variety of advanced and ease-of-use features to ensure continuous and accurate milling include:

- Sturdy frame ensures stability, while slim fit design fits nearly any lab space
- Steady and efficient ball screw-driven operation
- 360-degree rotation on a fourth axis (A axis) and 30-degree tilt on a fifth axis (B axis) to support deeper undercuts and elaborate restorations
- 10-Station Automatic Tool Changer (ATC) for continuous milling
- Includes storage drawer to properly store and protect tools
- Color-coded LED status lights signal current job progress
- User friendly VPanel configures settings, calibrates and starts milling from your desktop



Flexible DWX Milling Solutions

Run the DWX-51D and DWX-4W side-by-side for the most flexible and productive dry and wet milling solution. Using separate dry and wet DWX devices gives you the confidence to take on the maximum amount of glass ceramics and zirconia restorations without the need for back-and-forth set-up and cleaning of a single machine.



DWX-4W



DWX-51D

Peace-of-Mind, Reliability and Support

The DWX-51D offers unmatched reliability with the best warranty and post-sales support in the industry. Enjoy the benefit of certified service engineers that ensure your device is always up-and-running and a dedicated online and telephone support staff who can answer all your questions and concerns.