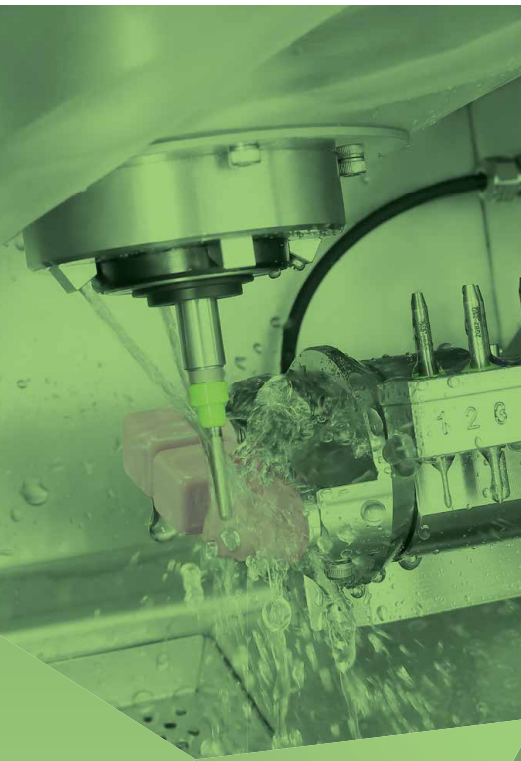




# DGSHAPE

A  Roland Company



# DISCOVER THE POSSIBILITIES

DGSHAPE DENTAL SOLUTIONS

# MATERIALS

The type of milling machine you need will be driven by the type of materials you want to mill. For zirconia, PEEK, PMMA, wax and glass-fibre composites, dry milling is ideal. But for glass ceramics and hybrid composites a wet milling solution is required.

With DGSHAPE, you have a choice of dedicated separate dry and wet mills. Why separate? Well, one of the main reasons for 'going digital' is to benefit from increased productivity. The difficulty with milling everything from one single machine is that if you switch from wet grinding a glass ceramic to dry milling zirconia, you have to thoroughly clean and dry the machine between processes, which wastes considerable time. If you don't, you risk cross contamination and a build-up of wet zirconia dust, resulting in a hard-to-remove residue.

Having two separate machines means both can be running at the same time. You'll also achieve a better result from machines that have been built specifically for wet or dry milling. Indeed, we have applied our 30 years of experience to optimise the performance of both our dedicated wet and dry solutions.

## Wet Milling

The latest dental technology enables wet milling of the following materials:

- Hybrid composite: combining resins and ceramics. These innovative materials combine high aesthetics with a level of shock absorbance, popular for implant restorations, crowns, inlays, onlays and veneers.
- Glass ceramics: lithium disilicate, feldspathic ceramics and more. These materials offer superior aesthetics through high levels of translucency and are indicated for restorations such as crowns, inlays, onlays, veneers and small bridges.
- PMMA: An Acrylic Polymer material, for long term single or multi unit temporary restorations whilst maintaining high aesthetics.
- Titanium: Titanium Custom Abutments offer numerous advantages for implant restorations. Pre-Face Abutments reduce manufacture times and provide a precise fit.



Composite Resin



Glass Ceramics



PMMA



Titanium Pre-Face Abutment



## Dry Milling

Dry milling machines are becoming ever more efficient and productive, bringing together a wide assortment of high-tech materials, delivering precise fit and high aesthetics, matching the clinical needs of the patient.

DGSHAPE's dry milling machines are perfect for a host of applications. All of the below materials work perfectly with the dry milling process.



Zirconia



PMMA



Glass fibre composite



Gypsum



PEEK



Wax



Pre-sintered CoCr metal



Composite resin

# APPLICATIONS

## Inlays and Onlays

With Automatic Tool Changer features and simultaneous pin-rotation, users can make quick work of inlays and onlays with wet milling or dry milling DGSHAPE technology.



## Crowns

Efficiently manufacture permanent full coverage restorations with wet milling or dry milling DGSHAPE technology from the latest Dental materials .



## Veneers

Wet mill veneers with the DWX-42W in glass ceramics or composite resin for a high-aesthetic Anterior restorations that perfectly mimic the natural tooth form.



## Bridges

The DWX-52DCi and DWX-52D can mill single or multiple bridge replacements of any size from a host of compatible materials.



## Copings

Copings are quickly and effectively milled by the DWX-52DCi and DWX-52D from a choice of materials for casting, or from materials to which porcelain is applied.



## Abutments

The DWX-52DCi and DWX-52D can mill single or multiple bridge replacements of any size from a host of compatible materials.



## Dentures and More

The DWX-52DCi and DWX-52D mills Dentures, Bars and other restorations from compatible materials with unstopable ease, exact precision and high aesthetics.



# DRY MILLING

## DWX-52DCi 5-Axis Dental Milling Machine

The DWX-52DCi 5-Axis Dental Mill with Disc Changer expands your lab production and profits with open architecture, material flexibility, unattended production:

- 5-axis simultaneous milling
- 6-slot automatic disc changer
- 15-station automatic tool changer
- Intelligent tool control
- Ioniser to reduce static when milling PMMA
- + other automated features.

The DWX-52DCi offers the ultimate in 24-hour productivity for users of all skill levels. Capable of producing a wide range of restorations, including crowns, copings, bridges, inlays and onlays, veneers, abutments, implant bars, screw-retained crowns, digital dentures, models, surgical guides and bite splints. The DWX-52DCi provides an exceptionally powerful, efficient, affordable and intelligent dental restoration solution.



**DWX-52DCi**



**DWX-52D**

## DWX-52D 5-Axis Dental Milling Machine

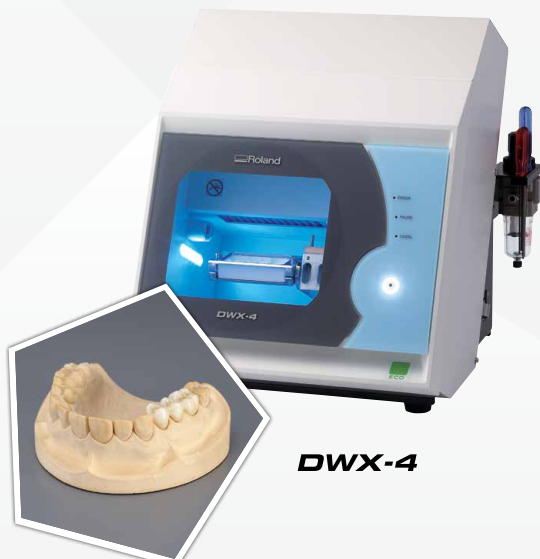
The next generation of the industry's best-selling dental mill has kept everything users love, and then made it even better:

- 5-axis simultaneous milling
- Clamp system for better disc management
- 15-station automatic tool changer
- Intelligent tool control
- Auto-adjusted air pressure
- Ioniser to reduce static when milling PMMA
- + other automated features.

The DWX-52D offers reliable, precise and affordable, milling machine with improved efficiency.

## DWX-4 4-Axis Dental Milling Machine

The industry's most cost-effective and user-friendly dental mill, the DWX-4 produces single crowns, copings, bridges and hybrid abutments with precision and ease. The DWX-4 is the ideal device for labs just getting into digital milling or labs that need a second device for urgent jobs. With the DWX-4 dental mill you can quickly and economically mill on-demand in a wide variety of materials, including Zirconia, Wax, PMMA, and the latest hybrid ceramics.



**DWX-4**



# WET MILLING

## DWX-42W

### Wet Dental Milling Machine

The DWX-42W enables wet milling of popular glass-ceramics, composite resins, PMMA and Titanium Abutments with high precision and accuracy. High-Speed Production with proprietary DGSHAPE spindle. Expanded 6-tool Automatic Tool Changer for uninterrupted milling. LAN capable for network and hardware connection and communication. VPanel user interface for easy monitoring of milling jobs and tools.



## EXTRACTION UNITS

### BOFA

#### Leader in Fume Extraction

BOFA's DentalPRO systems remove harmful dust and particulate through features such as multi-stage filtration, digital speed control and volatile organic compound (VOC) sensors.

- **DentalPRO Universal:** For DWX-52D, DWX-52DCi, DWX-4.
- **DentalPRO Base** (with or without compressor): For DWX-52D and DWX-52DCi
- **DentalPRO 400 Multi user dust extraction system for hand finishing dental applications:** For DWX-4.



DustPRO  
Universal



DustPRO  
Base



DustPRO  
400



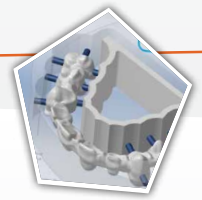
THE WORLD LEADER IN  
FUME EXTRACTION TECHNOLOGY

## SOFTWARE

### MillBox

#### Dental CAM Solution

MillBox is the dental CAM solution developed for milling any kind of restoration with any material. Equipped with a simple to follow user interface that is both innovative and appealing, MillBox simplifies the nesting and toolpath creation. An Interface specifically developed for immediate use, with exciting new features that allow you to work even faster. Specially designed for professionals who require simple and reliable tools. MillBox provides high performance in less time to get the work you want processed in a few simple steps.



## Accessories

For a full list of accessories for each DWX unit visit:  
[www.rolanddg.com.au/dgshape](http://www.rolanddg.com.au/dgshape)

## DGSHAPE - EMPOWERING PEOPLE TO SHAPE THE FUTURE

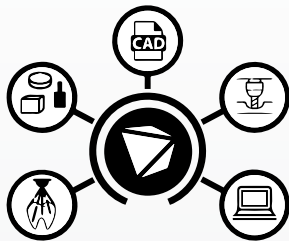
DGSHAPE is the brand name of the 3D business unit spun off from Roland DG with the core mission: “make innovation, make life better.” DGSHAPE delivers digital technologies that bring ideas to life, revolutionise business processes, and shape a better future. Our goal is to fuse human creativity with digital workflows to provide exceptional value across multiple endeavors, from individual craftsmanship to manufacturing, healthcare and beyond.

### RELIABILITY

Roland DG has been at the forefront of advanced machine manufacturing for 30 years, providing practical and reliable technology. DGSHAPE further delivers on this reliability promise but also improves user experience, making it incredibly easy to produce high quality, cost effective dental prosthetics while improving workflow efficiencies.

### EASE OF USE

DGSHAPE Dental Solutions have intuitive software controls and do not need complex controller interface software or hardware. All dental solutions come with a controller software called VPanel and can be driven directly from your computer. Plug and Play Windows drivers are included with all dental devices and can be driven directly from popular CAM packages or directly through the VPanel using RML or G-Code.



### AN OPEN SYSTEM

Open architecture allows DGSHAPE Dental Solutions to work with the latest materials and CAD/ CAM software so you're never limited by older technology or proprietary materials and software. If you already have a production solution, DGSHAPE Solutions work seamlessly with your existing scanner, oven, and compatible CAD/CAM software while eliminating the need to rely on a single source for materials.

### WARRANTY AND SUPPORT

DGSHAPE ensures that your machine is always up-and-running with a three-year warranty, plus unmatched service and support from a local network of dedicated dealers and certified service engineers. From our helpful customer support team to an abundance of training and education, Roland cares about your needs before and after machine purchase.



### DGSHAPE FINANCE

DGSHAPE Finance, Roland DG's dedicated finance program for the dental industry, offers tailored finance solutions for DGSHAPE equipment. DGSHAPE Finance is easy to obtain and is bundled directly from the manufacturer, so you are dealing with the one company, a company you can trust. A simple application process and approval within 24 hours will help you get your lab or practice off the ground quickly and with little fuss.

